

# 2024



# Product Guide

## ***Who we are ...***

We support the forensics community with innovative high-quality equipment to aid forensic analysis and investigation. We work directly with our customers to develop equipment, from evidence development chambers to forensics light sources, and we produce all of our equipment right at our headquarters in Germany. We directly support our customers around the world with trained professional resellers and technicians. We serve customers in North America via our subsidiary branch, Attestor Forensics US Inc., located in Quakertown, PA.

---

## ***Where we are ...***

All of our products are designed and produced at our headquarters facility in Bad Wurzach, Germany. Designed with the future in mind, our headquarters and production facilities in Bad Wurzach consider the environment and leave room for expansion.

For more info about our offices, visit our location in Bad Wurzach, Germany, or learn more about us by visiting our website online.



## ***Germany***

### **Attestor Forensics GmbH**

Zeppelinstr. 28,  
88410 Bad Wurzach,  
Germany

+49 (0)7564 949 14-0

[attestor@attestor-forensics.com](mailto:attestor@attestor-forensics.com)

[www.attestor-forensics.com](http://www.attestor-forensics.com)



## ***North America***

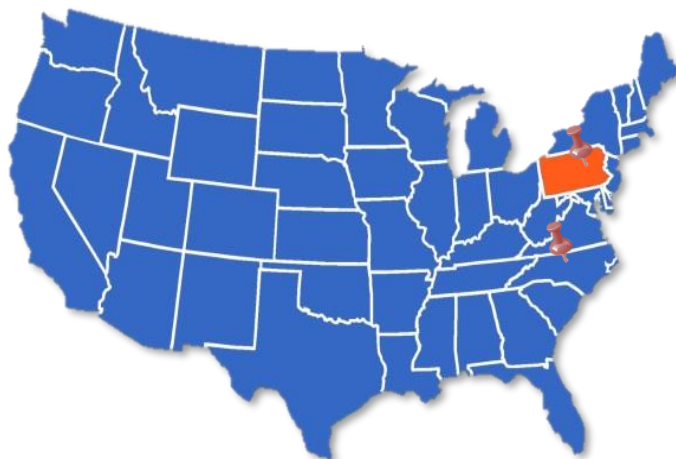
### **Attestor Forensics US Inc.**

+1 215 804 4092

[us@attestor-forensics.com](mailto:us@attestor-forensics.com)

[www.attestor-forensics.com](http://www.attestor-forensics.com)

North Carolina office customer support:  
+1 984 514 5584





# Evidence Detection

Equipment to search for and better visualize evidence at the lab or crime scene



# Fingerprint Development

Equipment for the development of latent fingerprints at the lab or crime scene

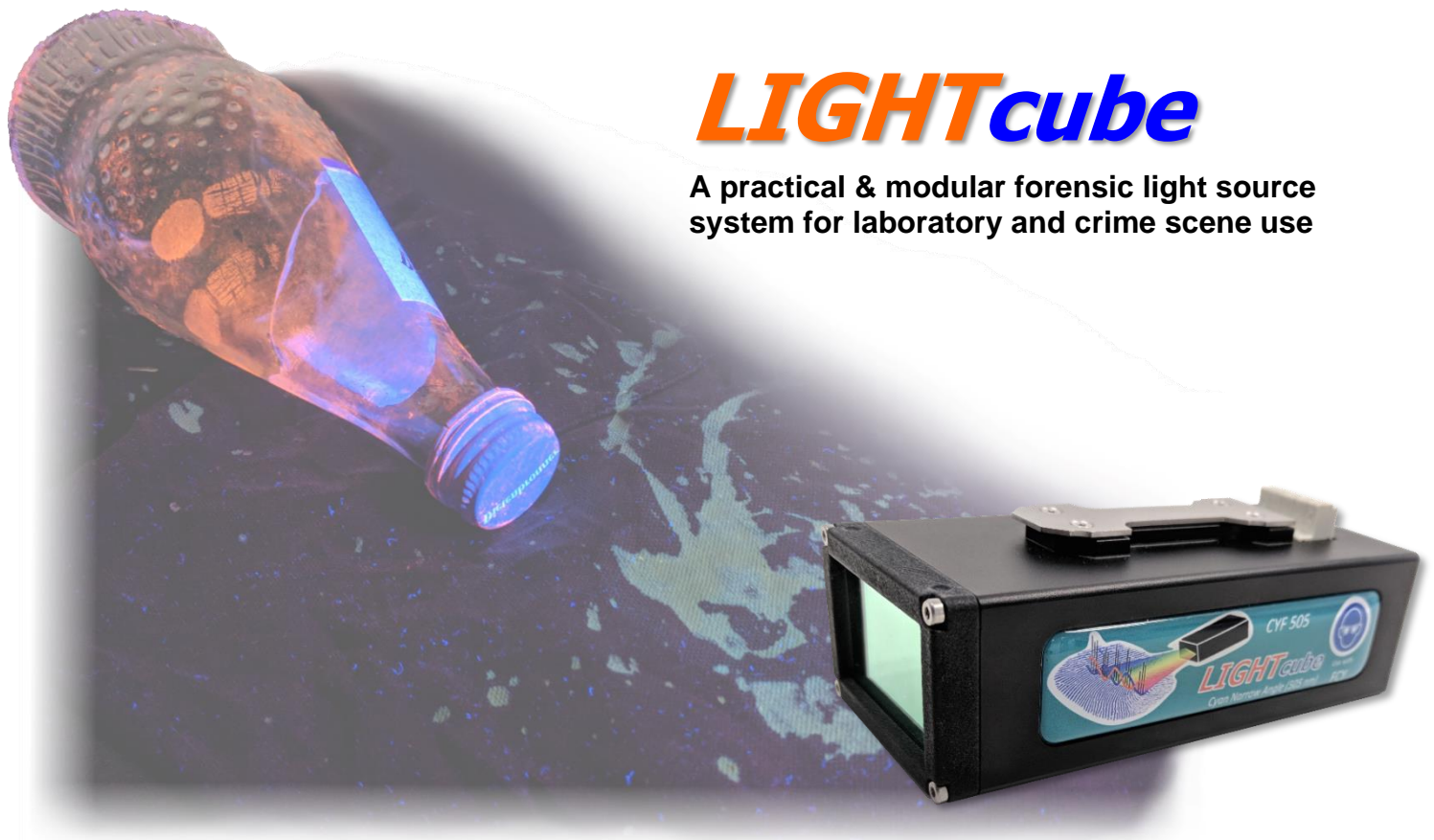


# Evidence Screening & Photography

Equipment for examining, photographing, and documenting evidence at the lab or crime scene







# **LIGHTcube**

A practical & modular forensic light source system for laboratory and crime scene use

## **Key Features:**

- Narrow range of light with one key wavelength per LIGHTcube
- Fanless design for easy cleaning and reduced DNA contamination
- Wide variety of light color modules available, from UV to IR
- White light available in two different light temperatures
- Adjustable beam angle with multiple beam widths available
- Modules of any color can be combined and used together for compatibility
- Quick-release system for fast assembly
- Color-coded goggles and lenses for viewing and photography
- Custom camera filters available



### Flexibility and Compatibility:

- Battery or corded operation
- Handle system for flexibility on crime scenes or in laboratory settings
- Screw adaptor for tripod connections
- Camera hot shoe adaptor for crime scene and laboratory photography
- Compatible LIGHTrail adaptor system for laboratory workstations and copy stands
- Modules can be connected to and controlled by a superior system like the CONTROLbox
- Compatible with SCENEview VisIR, LABview, and many other Attestor products for fast and easy alternate light source photography and evidence viewing



Available Colors	Useful Accessories
Daylight White 6500K	<ul style="list-style-type: none"><li>■ Practical color-coded viewing and safety goggles</li><li>■ Matching camera filters available in a range of sizes with threaded and magnetic attachment options</li><li>■ Multiple handgrip and power supply options</li><li>■ Additional fully customized kits available on request</li></ul>
Neutral White 5000K	
IR 850nm	
Red 630nm	
Orange 590nm	
Pure Green 530nm	
Cyan 505nm	
Blue-Green 470nm	
Royal Blue 447nm	
Violet 410nm	
UV 365nm	





# LIGHTrail & CONTROLbox

LIGHTrail is a laboratory mounting system for the LIGHTcube modular light source series.

## BASIC Version:

- Adjust the angle and horizontal position of the two LIGHTcube groups.
- Bus system allows for a group of up to four modules to be connected and adjusted on each 20 cm long rail



## PRO Version:

- Adjust the angle and horizontal position of the four LIGHTcube groups.
- Extra groups allow for more light position configurations
- 50 cm long rails can easily hold up to eight modules on each side



The rail system can be adjusted in angle and position for viewing and photographing the forensic evidence. Connecting a LIGHTcube to the system automatically connects it to power. CONTROLbox, the touch-screen panel display, allows for advanced LIGHTcube control options like saving lighting scenarios.

# SCENEview VisIR

The new universal tool for examining and documenting evidence like body fluids, blood, GSR, fibers, hair, fingerprints and more at the lab or on scene

## Features:

- High-resolution camera with high IR-sensitivity
- Fast autofocus
- Compact design < 700g
- 8" touchscreen display
- Battery pack (over 1 hour of operation), or corded and stand-mounted operation
- Automatic corresponding filter selection
- LIGHTcube mount with adjustable light angle
- User-customizable light settings
- Optional upgrades for use with compatible Attestor products



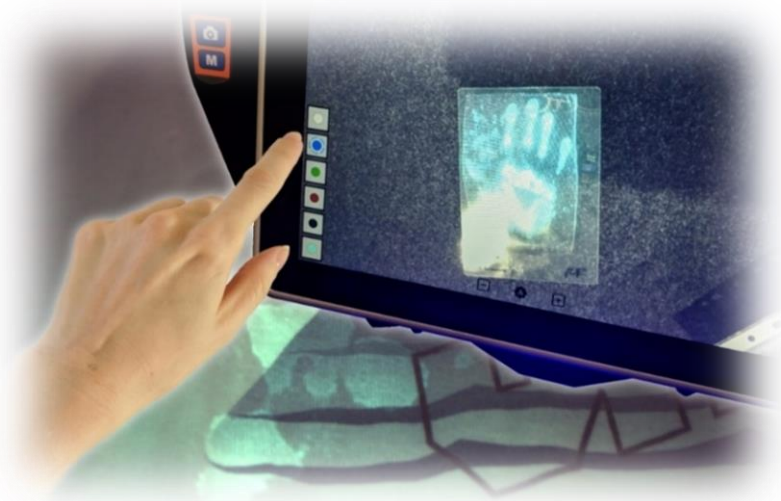
## Versatile use in the lab & on scene

- SCENEview VisIR can be used as a stand-alone handheld device or mounted on a stand. With supplied power, the system will allow users advanced lighting options with the LIGHTrail and other compatible Attestor systems.



# LABview

The laboratory video & photography evidence examination system to inspect blood, GSR, body fluids, trace evidence and more



## Features:

- Powerful VIS and IR camera with low-light sensitivity and fast auto-focus capability
- View, film, and photograph evidence like GSR, bloodstains, body fluids, trace evidence, fingerprints, and more, easily in one system
- Integrated filter wheel with custom, automatic, and manual filter-selection options

- VIS- and IR-only LV700 model; LV800 model, with the light amplifying camera for better detection of chemo-luminescent reagents like Luminol
- Easy automatic or manual focus control via the dual handgrips
- Simple video and photo recording without an external PC
- Advanced control options via the touchscreen display

## Optional features and accessories:

- Compatible with the full range of LIGHTcubes, from UV to IR
- Optional external monitor hookups
- Variety of mounting options, including PHOTOvent or EVIscreen workstation attachments. Custom, stationary or portable laboratory stand mounts available.





# NINcha P31

The mobile forensic climate chamber brings the lab to you so you can develop porous evidence outside the laboratory

## Basic Features:

- Fully functional development chamber
- Reliable & controlled forensic evidence development outside the lab
- Evidence racks each sized to hold two A4 sheets at once
- Large, condensation-resistant viewing window for monitoring evidence development in progress
- Stainless steel chamber and accessories are durable and easy to clean
- Integrated water tank can be easily removed for cleaning or refilling



## System Highlights:

- Full system built into a durable rolling case for easy storage and transportation
- User-friendly control system, identical to the full-sized NINcha models
- Heated viewing pane prevents condensation buildup during development to prevent drips on evidence and ensures the evidence is always visible
- All accessories easily fit in the interior chamber for compact storage and transportation

# ***NIN**cha Series*

**Forensic climate chambers for developing porous evidence treated with NIN, IND, or DFO**

## **Basic Features:**

- Three sizes of standing laboratory models
- Pre-programmed cycles for NIN, DFO, and IND
- Custom cycle options with full parameter control
- Automatically detected NIN, IND, and DFO filters
- Temperature control range from 25 – 110°C
- Humidity control range from 40-80% rH
- USB datalogger for quality control documentation
- Active condensation control helps avoid moisture build-up and drips that could damage evidence
- Stainless-steel interior for easy cleaning



## **Circulation, Filtration & Ventilation**

- External ventilation is optional
- External ventilation hookup options allow for connection to laboratory ventilation systems if needed
- Filter options to remove dust and debris and reduce contamination risks and evidence damage

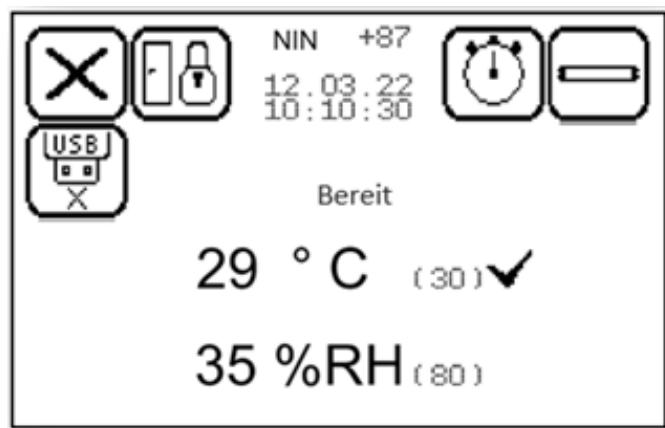
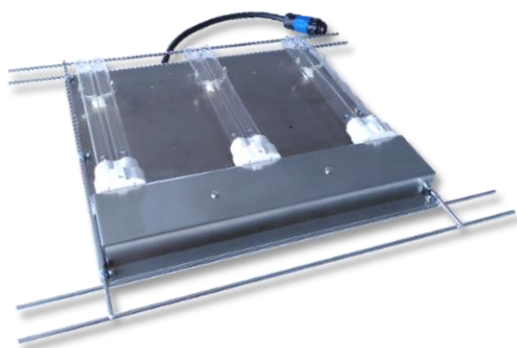




# NINcha System

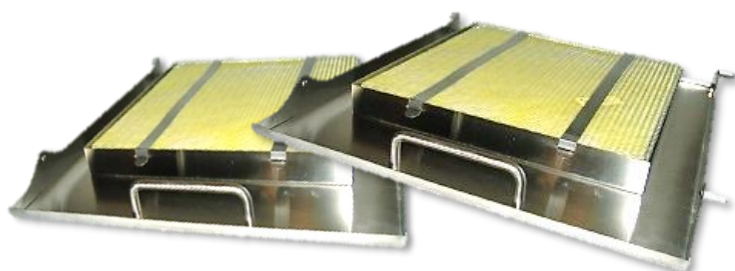
## System Features

- Touchscreen display provides cycle options & on-screen instructions
- Pre-programmable timer for process cycles
- Active filter monitoring and on-screen filter life display
- Interlock feature secures the door during evidence development cycles
- USB-Datalogger records development parameters for quality documentation



## Additional & useful NINcha accessories:

- DFO-coded filter unit
- Indandione-coded filter unit
- Removable UV-C decontamination unit for DNA contamination control
- Accessory storage box (pictured left, fits under the M31 model)
- Heavy-duty laboratory trolley option with additional shelving (for the S31 model, not pictured)

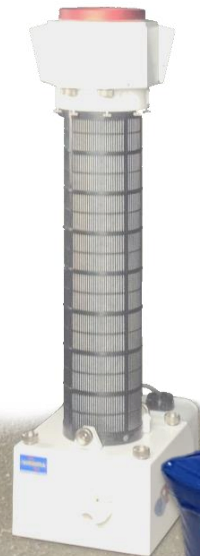


# MOBIfume

**Portable cyanoacrylate fuming systems with wireless control for processing large spaces and large items of evidence**

## **Basic Features:**

- Unit-interchangeable humidifier, vaporizer, and filter
- Durable and user-friendly touchscreen tablet with multiple language options
- Fume spaces of 50-60 m<sup>3</sup> with a single unit
- Convenient pre-programmed and custom cycle setting options
- All settings, including the developer type, humidity and filter management can be fully controlled via the tablet





## Maximum Versatility:

- Process whole scenes, rooms, or fuming tents at once.
- Process large items without dismantling them
- Run multiple MOBIfume units together or adjust their settings individually
- Scalable operation allows for additional units to be added and controlled from the same tablet as needed



## MOBIFUME BLACK EDITION

- The sleek MOBIfume Black units come with a specialized coating that cyanoacrylate has difficulty sticking to, making cleaning and maintenance even easier.

# MEGAfume Series

Cyanoacrylate fuming chamber series for developing latent fingerprints on non-porous surfaces

## Basic Features:

- Exterior frame construction allows for 360° viewing and easier cleaning of interior glass and stainless-steel surfaces
- Interior fuming chamber fixtures can easily be removed without any special tools
- Modular evidence rack system can be easily adjusted for smaller or larger pieces of evidence
- Available in sizes S, M, and XL



## Optional Accessories:

- Additional barrel-mount firearm racks and rifle support brackets for fuming firearms
- Pin-support system for bottles and cans
- Optional UV-C DNA decontamination unit
- Storage box for racks and accessories (fits under M model)

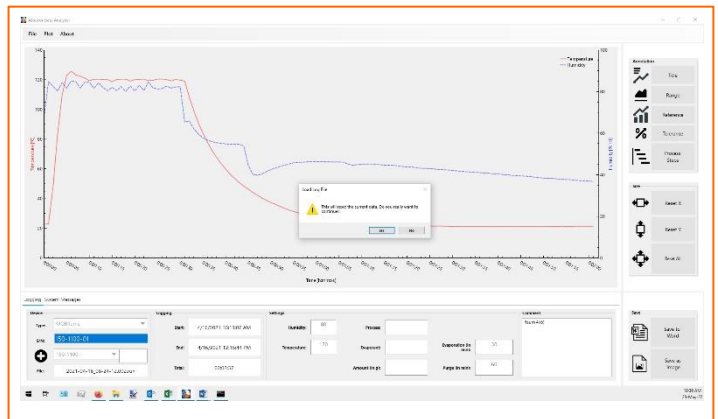
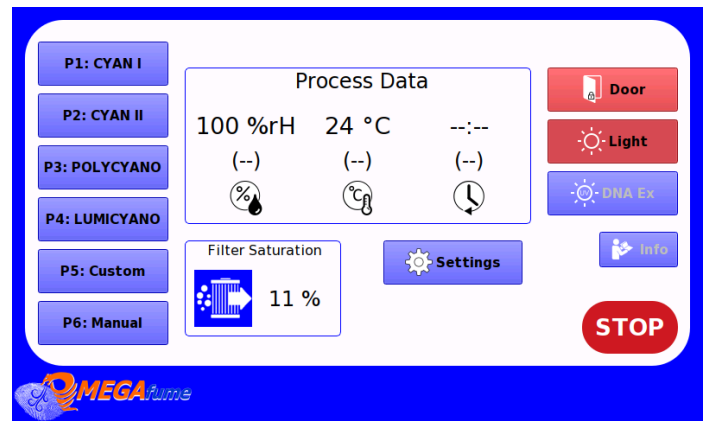




# MEGAfume Control

## Control Features

- One-touch pre-programmed cycles for common cyanoacrylate and fluorescent developers in liquid and powder form
- On-screen guided development cycles
- PIN-secured options to help prevent unauthorized access to evidence
- USB datalogger records all important cycle parameters during cycles for quality control and documentation. Downloaded cycle information can be easily viewed and used to generate reports with custom templates.

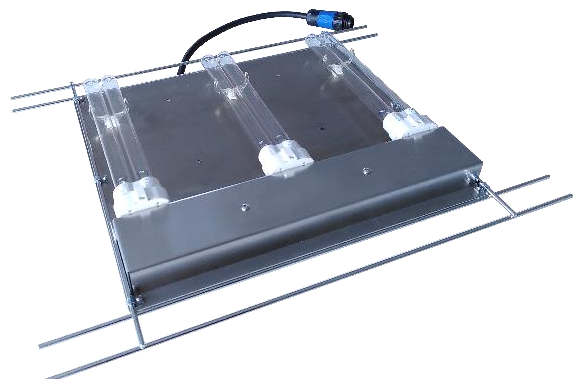
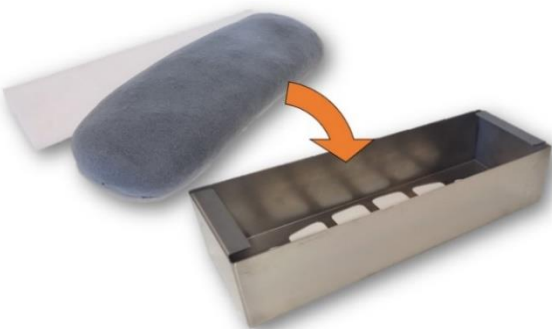


## Innovative Filter Management

- Simple tool-less filter access for quick replacement and maintenance
- Advanced filter manager feature tracks the type and amount of developer used, to calculate and display remaining filter life
- System safety lock feature prevents new processes from being started when the filter is completely saturated, for added user safety

## Refillable Filters

- The MEGAfume systems are now equipped with refillable activated-carbon filter systems that are more cost-effective and environmentally friendly.



# MINIfume

The portable cyanoacrylate fuming chamber for the development of latent fingerprints on non-porous surfaces

## Basic Features:

- A complete fuming system in a compact rolling case
- Stainless steel interior makes cleanup easy for decontamination between evidence cycles
- Large & durable, glass viewing pane for evidence development observation
- Integrated filtration system requires no additional external ventilation laboratory system hookups
- Active filter-monitoring system



## Portable and Practical

- Rolling heavy-duty Pelican case keeps the portable fuming chamber safe during storage and transportation
- Control panel, cords, and fuming chamber accessories can be internally stowed in the laser-cut foam organizer for compact storage



# POWDERado

The ergonomic, height-adjustable and benchtop, downdraft filter fingerprint powder workstations

## Basic Features:

- Intuitive user-friendly touchscreen interface
- Adjustable downdraft filter flow
- Ductless filtration venting system
- Integrated cold white LED illumination
- Durable and practical stainless-steel panel work surface construction
- Clean enclosed storage for total containment during work interruptions or breaks



## Optional Features:

- Optional adaptor and mounting system for LIGHTcubes provides you with even more lighting options (including UV and royal blue for fluorescent powders)
- Motorized height-adjustable pillar stand
- Rolling lab cart for a portable option with extra storage space



# PHOTOvent

The modern solution for a safer and cleaner  
downdraft filter photography workstation

## Basic Features:

- Motorized camera arm for coarse and fine positioning, ideal for camera systems with height-dependent focus settings
- Shelf attachment with cable chain and power connections for light sources and other accessories
- Stainless-steel height-adjustable work surface option for easy cleaning and decontamination
- Strong downdraft airstream system with five strength levels and a ductless filtration system to reduce odors, dust, and other particulates
- Two-phase filter system with convenient monitoring
- Tool-less filter access for easy maintenance
- Two size options, S51 and L51

## Optional and Alternative Features:

- Universal mounting frame for common user-sourced photography equipment
- Upgrade options for the LIGHTrail and LIGHTcube forensic light sources
- Additional work surface options with or without scales in matte black or white





# TORnado

a practical and containable toner and ozone reduction system for electrostatic detection of handwriting on documents



## Basic Features:

- Three-stage integrated ductless filtration system and horizontal work surface airstream, independent of external ventilation
- Ductless filtration system removes particulates from the workspace, starts automatically when any panels are opened, and can be adjusted in strength
- Adjustable mounting space for your ESD (contact us for compatible model information)
- Integrated power connections for your ESD
- Holding tray for corona and additional storage space for tools and developers
- Simple touchscreen display with filter monitoring for easy control and maintenance
- Closing the panels provides safe dust-free storage of your ESD, accessories, and evidence being processed during work interruptions
- Catch tray for collection of leftover toner beads can easily be pulled out without moving any heavy equipment, making cleanup safer and easier
- Integrated cold white LED illumination

## Optional Features:

- Optional motorized height-adjustable base
- Universal heavy-duty laboratory trolley with extra shelving space for storage



# Attestor Forensics